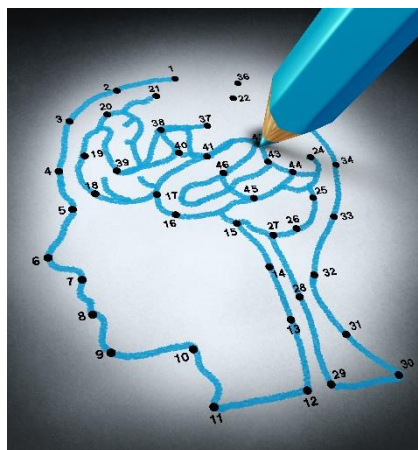


# The Gut-Brain in MS: Probiotic Trial

## Call for Research Participants



We are looking for volunteers living with Relapsing Remitting Multiple Sclerosis to take part in a clinical trial investigating the effects of probiotics on the gut-brain connection and cognitive symptoms in MS.

As a participant, you will be asked to undertake a **12-week treatment with a probiotic supplement (random allocation to active probiotic or placebo)**. Prior to starting the treatment and again at the end of the treatment, you will be asked to complete a **questionnaire**, undertake a **brief interview**, undertake some face-to-face **assessment tasks**, and provide **blood, urine and stool samples**. The questionnaire should take around 1 hour and the interview/tasks no longer than 2.5 hours to complete.

You will be reimbursed **\$60** for your participation at the end of the final assessment session.

**To volunteer or for further information please contact:**

**Ms Terry Purton**

PhD Candidate and Study Coordinator  
School of Psychological Sciences, College of Health and Medicine  
University of Tasmania



**Ph: 03 6324 3129**

**Email: [terry.purton@utas.edu.au](mailto:terry.purton@utas.edu.au)**



IMPROVING HEALTH OUTCOMES



This study is being funded by The Clifford Craig Foundation and MS Australia and has been approved by the University of Tasmania Human Research Ethics Committee (H0026849).